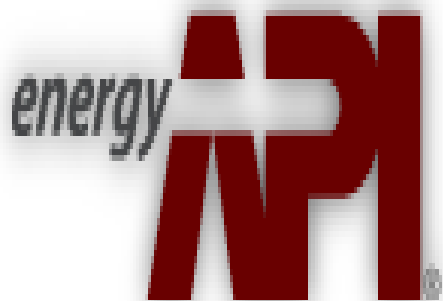


API International Trade and Customs Conference  
March 27, 2012  
New Orleans, Louisiana



AMERICAN PETROLEUM INSTITUTE



U.S. Customs and  
Border Protection



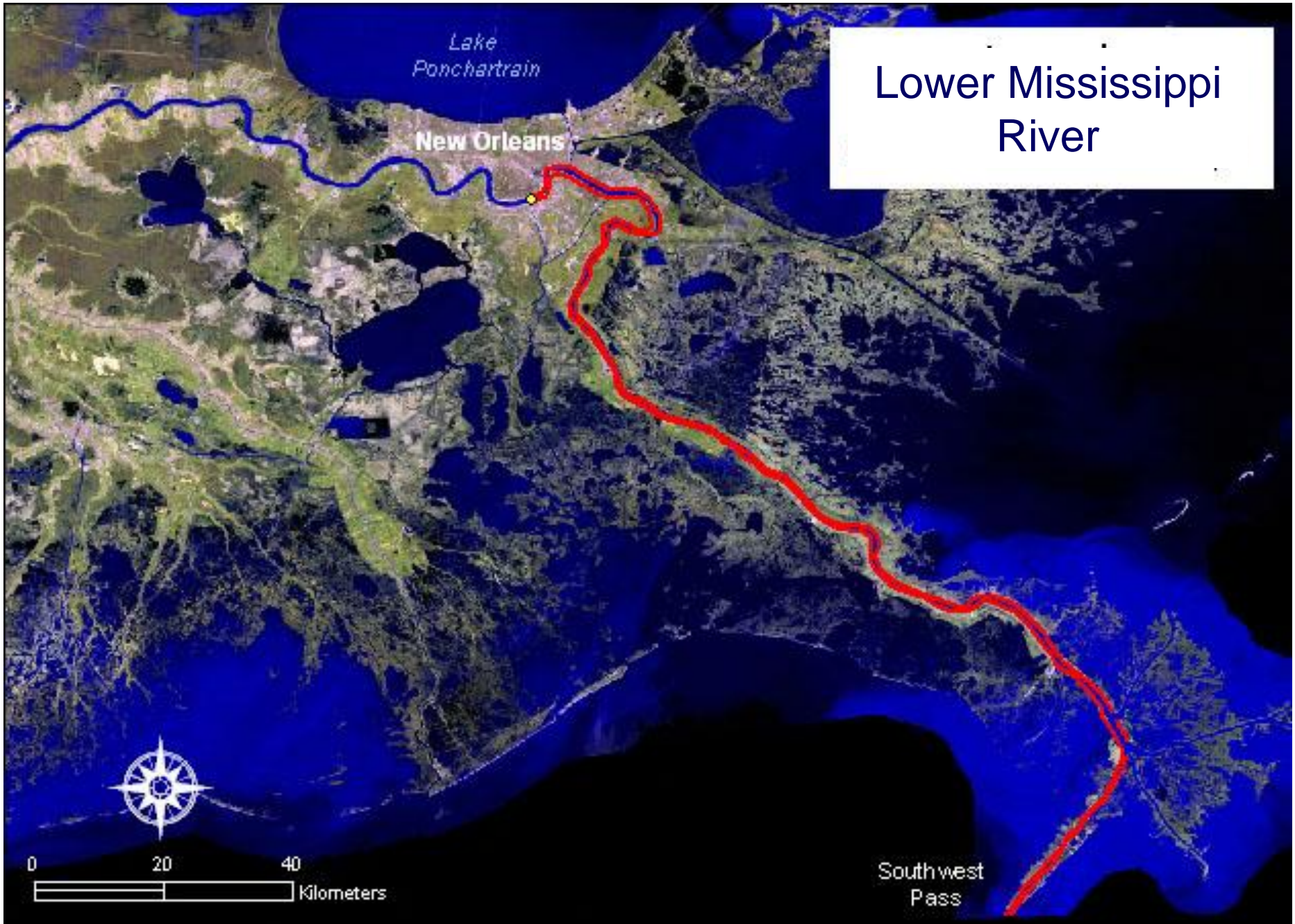
# Area Port of New Orleans *Area of Responsibility*

- NEW ORLEANS
- MORGAN CITY
- BATON ROUGE
- GRAMERCY
- LAKE CHARLES
- SHREVEPORT



U.S. Customs and  
Border Protection

# Lower Mississippi River



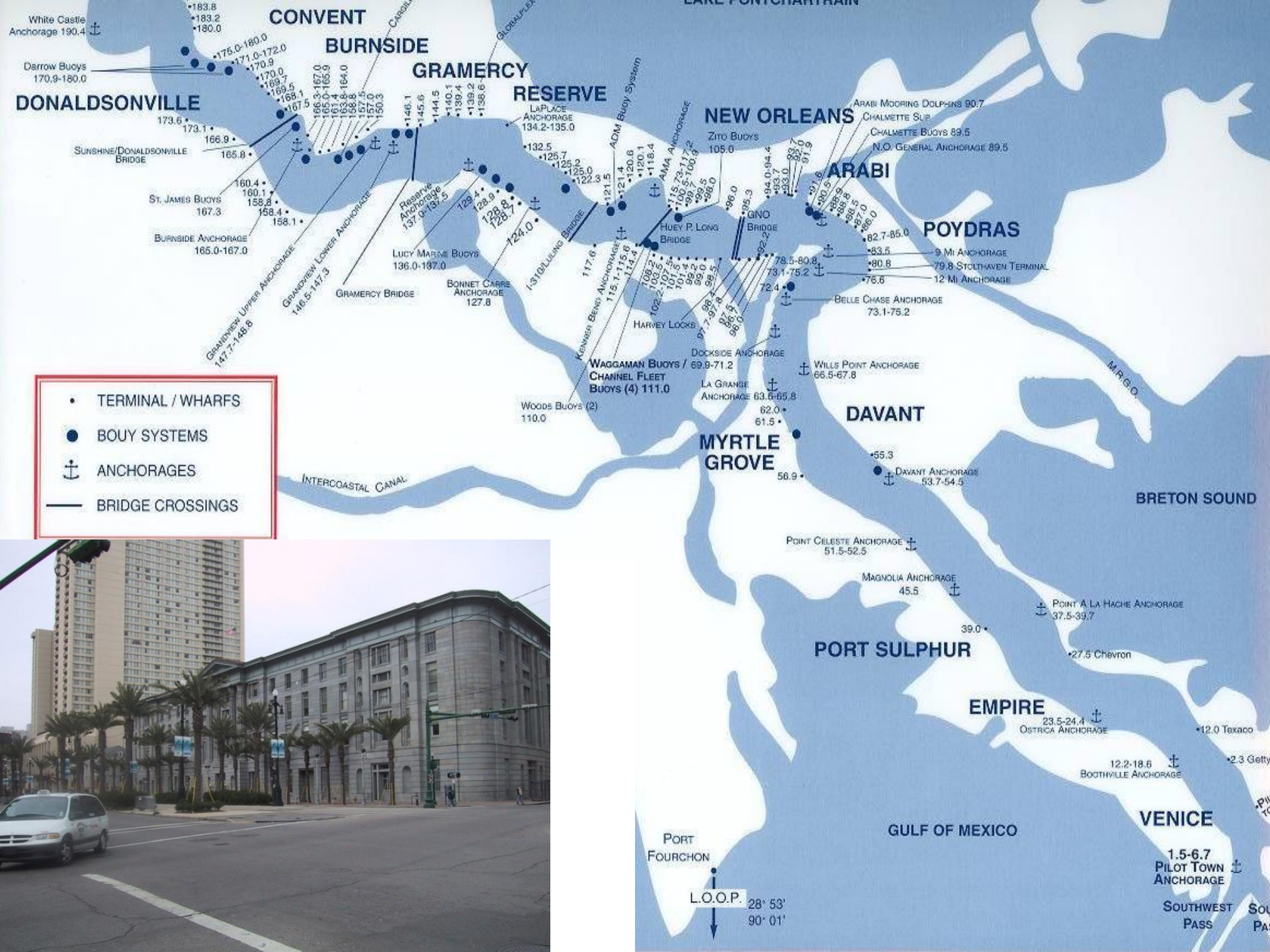
Lake  
Ponchartrain

New Orleans



0 20 40  
Kilometers

South west  
Pass



- TERMINAL / WHARFS
- BOUY SYSTEMS
- ⚓ ANCHORAGES
- BRIDGE CROSSINGS



PORT  
 FOURCHON  
 L.O.O.P.  
 28° 53'  
 90° 01'



# Glimpse of the Petroleum Industry in Louisiana

- 16 active oil refineries in Louisiana
- 17% of nation's refining capacity (2008)
- 3<sup>rd</sup> leading state in refining capacity
- 15 billion gallons of gasoline
- LOOP handles 13% of nation's imported oil
- Ancillary industries
  - Deepwell support
  - Crew and supply vessels
  - Catering
  - You name it



U.S. Customs and  
Border Protection

# CBP Interaction with Oil Industry

- Office of Trade
  - Account Managers
  - Regulatory Audit
- Office of Information and Technology
  - Laboratory Services
- Office of Field Operations
  - CBP Officers
  - Import Specialists
  - Entry Specialists
  - Fines, Penalties and Forfeitures
  - Drawback Specialists



U.S. Customs and  
Border Protection

# CBP-OFO Interaction with Oil Industry

- **CBP Officers**
  - FTZs; e214s; Cargo holds; FIRMS codes
- **Import Specialists**
  - Classification and appraisalment; OGA; admissibility
- **Entry Specialists**
  - Bond requirements; warehouse entries; filer codes; protests
- **Fines, Penalties and Forfeitures**
  - Penalties; prior disclosures; liquidated damages; seizures
- **Drawback Specialists**
  - Drawback entry processing; fungibility

